



GAT MONTHLY MEMBERSHIP PROGRESS REPORT

Results as of: 5/31/2024

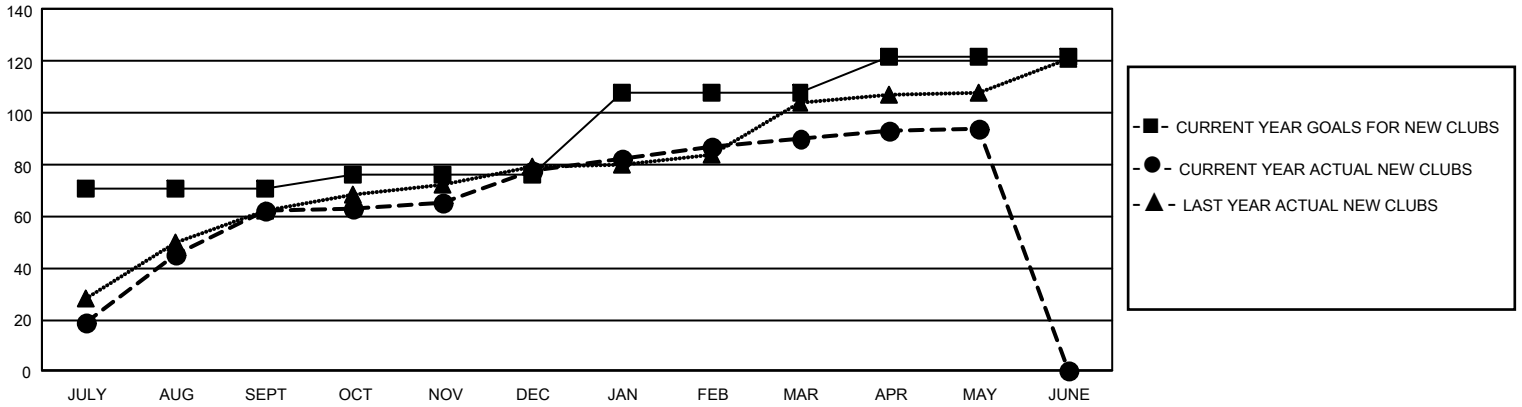
GMT Constitutional Area 6 - I, Group G

REPORT DOES NOT INCLUDE CLUBS IN UNDISTRICTED AREAS.

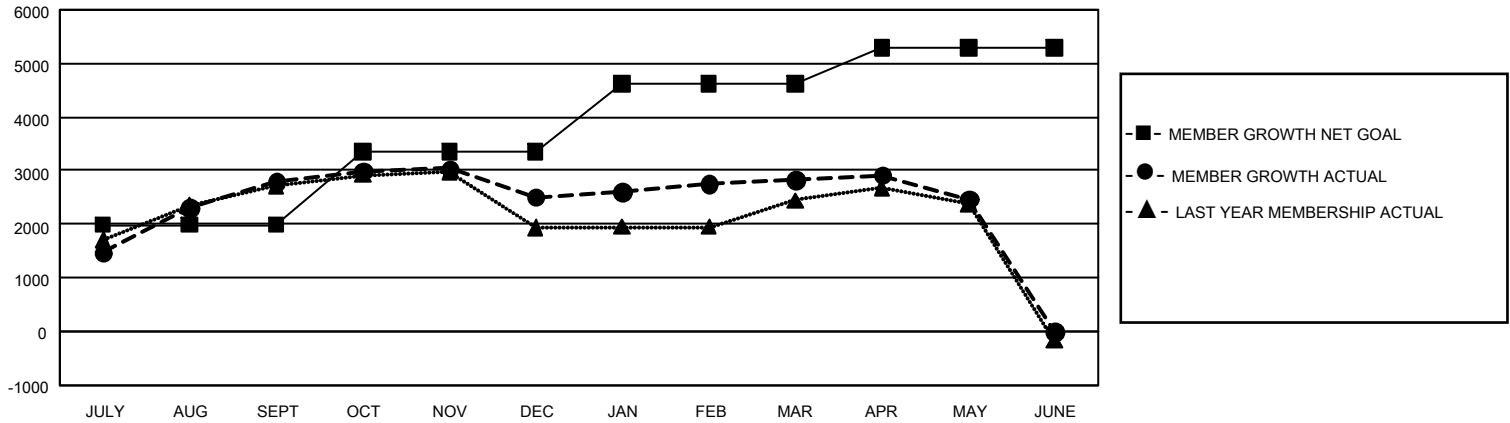
Clubs			
RESULTS FOR 2023-2024			
QUARTER	NEW CLUB GOAL	NEW CLUBS	DROPPED CLUBS
JULY/AUG/SEPT	213	62	19
OCT/NOV/DEC	15	16	40
JAN/FEB/MAR	96	12	8
APR/MAY/JUNE	42	4	2

Members			
RESULTS FOR 2023-2024			
QUARTER	MEMBER GROWTH NET GOAL	MEMBER GROWTH ACTUAL	DROPPED MEMBERS ACTUAL (including transfers)
JULY/AUG/SEPT	1990	4,392	1,364
OCT/NOV/DEC	1370	1,779	1,993
JAN/FEB/MAR	1255	1,072	584
APR/MAY/JUNE	675	650	842

GOALS AND ACTUAL NEW CLUBS CUMULATIVE



GOALS AND ACTUAL MEMBERS CUMULATIVE



DROPPED CLUBS: 69	787 CLUBS OF 1,141 ADDED 1 OR MORE NEW MEMBERS	<u>GENDER DISTRIBUTION</u>	
		MALE 27,484 (68.04%)	FEMALE 12,906 (31.95%)
<u>DROPPED MEMBERS</u>		NON BINARY 1 (0.00%)	PREFER NOT TO ANSWER 5 (0.01%)
DECEASED 120	CLICK HERE FOR CUMULATIVE MEMBERSHIP DATA	TOTAL FAMILY UNIT MEMBERS 18,994	
CLUB CANCELLED 1,069		FAMILY MEMBERS PAYING HALF DUES 11,448	
OTHER 3,582			
TOTAL 4,771			